

# Along The Path

Vol. 2, No. 2

www.centrahealth.com

**G**reetings...

We are delighted to be celebrating our 20th anniversary of helping adults recover from chemical dependency. It has been an honor to serve patients at Pathways Treatment Center over the past two decades. We



**Brent McCraw**

are grateful to have been a part of the lives of so many people in their quest to access recovery. We're especially appreciative for the support from our alumni.

We also want to thank the family of the late Clarisse "Carol" Kepler for their financial gift which will launch a new Scholarship Fund at Pathways. This fund will eventually fund care for patients without the ability to pay for treatment. And we would like to thank you—our alumni and others in the community—in advance for considering a gift to support this new scholarship fund.

Mark your calendars for a special Pathways Alumni Holiday Party celebrating our 20th anniversary on December 5. Turn to the back page for details. I hope to hear from you, and I wish you peace.

*Brent A. McCraw*

Brent A. McCraw, M.Ed.  
Director

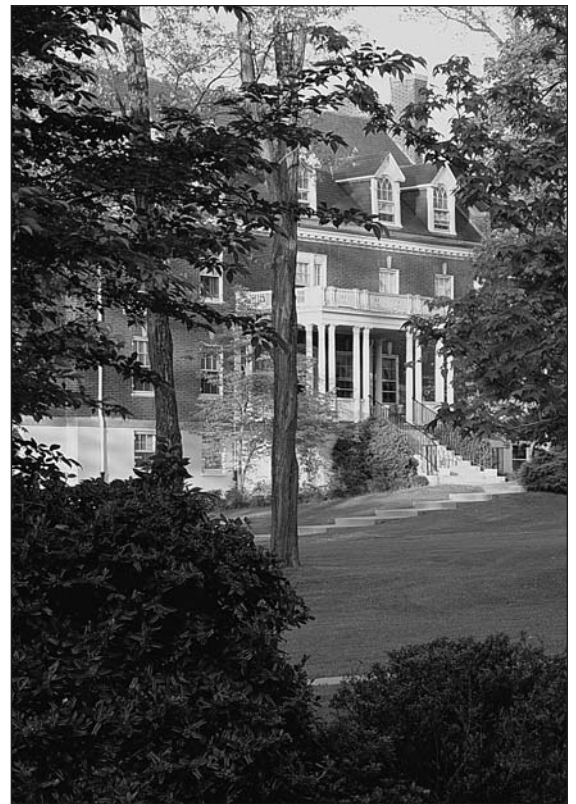
## Pathways receives gift for scholarship fund

The family of the late Clarisse "Carol" Kepler (1916–1994) has made a financial gift to Pathways Treatment Center in her memory and spirit of giving to others. The gift will launch a new Scholarship Fund at Pathways, eventually funding care for patients without the ability to pay for treatment.

Known as Carol in the recovering community, Kepler enjoyed many years of recovery from alcohol dependence. She was committed to 12-step support groups and sponsored many recovering alcoholics in the program. Of the numerous organizations and causes with which she was involved, she felt most strongly about the 12-step program.

Kepler embraced life broadly. A native of Long Island, N.Y., she graduated from Connecticut College For Women. She raised four children on Long Island and was enthusiastically engaged in her children's lives. She volunteered for Brownie and Boy Scout troops, served on the National Girl Scouts Council, assisted with the gymnastics program at her children's elementary school and was active in the Meadowbrook Hounds Pony Club, Long Island.

In addition to her children's activities, Kepler enjoyed a wide range of other pursuits. She loved to travel, both for pleasure and humanitarian purposes. Among other destinations, she traveled to China, Central and South America. On one trip, she trekked to Honduras for an extended stay assisting in the recovery after significant hurricane damage. While on Long



**Pathways Treatment Center**

*Continued on the back*



*Alumni:*

*You Are Cordially Invited*

Annual  
**Holiday Party**

*Sunday  
December 5*

Registration  
3:30 p.m.

Speakers  
4 p.m.

Heavy hors d'oeuvres  
& Reception  
5 to 7 p.m.

Craddock Auditorium  
Virginia Baptist Hospital

*RSVP by December 1  
at (434) 947-4455*

*Join us for heavy hors d'oeuvres,  
music and friends in  
celebration of 20 years of  
Pathways Treatment Center.*

**Along The Path**

Vol. 2, No. 2

November 2004

Produced by Centra Health's  
Mental Health Services and  
Communications/Marketing  
Department.

For more information about  
the Mental Health Services division,  
please call (434) 947-4447.

For referrals or admissions,  
call Pathways Treatment Center  
at (434) 947-4455 or toll-free,  
(866) 749-4455.

**Centra Health**  
Virginia Baptist Hospital  
Pathways Treatment Center

# Pathways receives gift for scholarship fund

*Continued from the front*

Island, Kepler loved to sail in the afternoons to relax. She was a supporter and fundraiser for the Huntington Symphony on Long Island and a member of the Huntington Methodist Church.

Kepler entered treatment for alcoholism while living on Long Island and remained sober until her death in 1994.

Kepler moved to Lynchburg in the early 1980s, living on a small farm with horses, cows and gardens. She continued to engage life fully in Lynchburg, belonging to the Piedmont Literary Society and a local garden club and traveling. She accompanied Lynchburg College on several trips abroad. She continued to be involved with 12-step support groups, sponsoring many recovering alcoholics in this community, including some of the recovering staff at Pathways. Through sponsorship and participation in meetings, Kepler demonstrated her gratitude for recovery and her faith in a higher power. She touched many deeply on their journey toward recovery.

Her family hopes their gift will continue her legacy of giving to others. Pathways Treatment Center receives this gift with gratitude and the expectancy that her spirit of giving will take root, grow and blossom in a tangible way through the Scholarship Fund at Pathways.

## How to give to the Scholarship Fund at Pathways

Centra Health appreciates the generous donation from the Kepler family to Pathways Treatment Center, which has been helping adults recover from chemical dependency since 1984.

The new Scholarship Fund at Pathways, which will fund care for patients without the ability to pay for treatment, will be managed by Centra Health Foundation.

Outright gifts of cash, real estate, appreciated securities, or given in honor or memory of a loved one are welcome. Donors also may establish a deferred gift through the Centra Health Foundation's planned giving program. Planned giving options include charitable gift annuities, charitable remainder trusts, charitable lead trusts, a gift by bequest, gift of life insurance or life estate gift.

Gifts are 100 percent tax deductible, and donors may be recognized for their gifts or remain anonymous.

Cash gifts to the Scholarship Fund at Pathways should be mailed to Brent McCraw, director, Pathways Treatment Center, 3300 Rivermont Ave., Lynchburg, VA 24503.

For more information about other forms of gift-giving, please call McCraw, (434) 947-4455, or Kathryn M. Pumphrey, executive vice president, Centra Health Foundation, (434) 947-4791.